

# TECHNOLOGY REDISCOVERED!

Project & Asset  
Management

**OPERATION**  
CONSULTANT





# MINING TECHNOLOGY

## COMPANIES INVOLVED:

KRASNY PROJECTS PVT.LTD  
THE GLOBAL MACHINES LLC-FZ  
IC-SURE PROJECTS PVT.LTD

## SERVICES:

### Mining technology company with wide experience in:

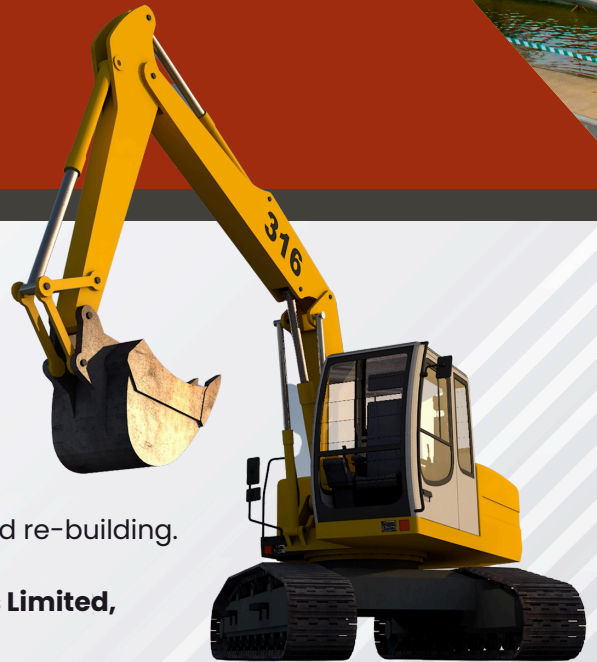
- Global equipment trading
- Mine development and operations
- Equipment operations, maintenance with spares and re-building.

### Global advisor to a Universal MEP Projects & Engineers Limited, a TATA enterprise providing:

- Strategic business development
- Global sourcing
- Technical services with manpower

### Associated with several Global and Indian mining and equipment trading companies:

- Intergrated Coal Mining Limited
- G.S.Atwal (Engineers) Pvt. Ltd
- Birla Corporation Ltd
- Sagmania Coal Mines Ltd.
- Siberian Gipshakht Mining University
- CETCO Ukraine
- Voltas Ltd
- Universal MEP Projects & Engineering Services Ltd.
- EMTA Coal Limited
- BG Mining & Movers
- Setlite Engineers Limited
- Thriveni Earthmovers Limited
- South West Equipment, Dubai





# Mining Ecosystem

## 360° MINING

### BESPOKE CURATED SERVICES

Mine infrastructure construction,  
Human resource management,  
Blasting, Excavation, Haul road & Dump management,  
De-watering & Environmental management,  
Rehabilitation & Resettlement,  
HEMM purchase planning,  
HEMM & Mine infrastructure maintenance and operations.

## TECHNICAL SUPPORT

- Technical manpower
- Research and Analysis of mining operations
- Man- Machine Time synchronisation
- Re-building and supply of spares or assemblies
- Business development
- Global sourcing of technology partners.



## **PLANNING & DESIGN**

Mining, although being capital intensive is also economically rewarding. The secret lies in meticulous operational & financial planning with robust design technology. We rely on our decades of experience with our foreign & domestic partners to ensure profitability from the first box cut.



## **CONSTRUCTION**

Infrastructure construction including Haul road, Dump yard, Pit, Material handling plant - engineering & build quality will determine the optimal cycle time and life cycle cost of the project.

## **HUMAN RESOURCE**

Machines are operated by people. People require expertise which comes from meticulous strategic management. A motivated, qualified and efficiently delegated team will synchronize all operational functions leading to achieving targets on time, every time.

## **OPERATIONAL MANAGEMENT & AUDIT**

Man machine synchronization, Blasting planning to increase bucket fill and optimal rock fragmentation, Hot seat swap to improve efficiency, Haul road & Dump site maintenance to improve cycle time apart from reducing tyre & mechanical damage to HEMM, ensuring optimal HEMM availability, road signage and gradient management, High performance preventive planned maintenance of all asset, zero tolerance towards inefficiency, maintaining high safety standards, site illumination, vendor management, camp site maintenance, workshop upkeep, engineering efficiency, fuel & explosive safety and keeping a high morale amongst the work force along with local population are key to operational success.



**SELECTION OF MINING MACHINES & INFRASTRUCTURE EQUIPMENT:**

**PARTNER**  
 VOLTAS LTD. MINING & CE DIV(A TATA ENTERPRISE)  
 KRASNY, brings in World class resources in Global sourcing of technologies, Heavy Earth Moving Machineries, Crushing & Screening equipment. Offered on turn key as a hassle free managed solution, including lifetime maintenance and operation.

**EQUIPMENT:**  
 Heavy Haul Dump Trucks, Large bucket Excavators, Rope Shovels & Draglines, Loaders, Graders, Dozers.

**INFRASTRUCTURE:**  
 Crushing & Screening solutions. Solar Power plants. Electrical sub station. Civil constructions.

**THE MECHANICS OF MINING OPERATIONS**

*We take full responsibility!*  
**MANAGED SERVICE**

24 x 7. 365 days a year!

We offer complete 360° managed services to our discerning clients, no strings attached!

Be it machines sourced through us or through third parties, once we have carried out a health audit, we do not differentiate. Our managed services include, but are not restricted to:

Guaranteed Availability based Maintenance & Repair Contracts, Rebuilding solutions, Operation solutions, Technical solutions, Training: Virtual reality based simulations, Safety & environmental audits, Geological survey, drilling, blasting, excavation services, Rehabilitation & resettlement management.

**Our strategic partner VOLTAS is a World class company with decades of services having an enviable industry reputation in the mining arena.**

**VOLTAS**

**A TATA Enterprise**



# MINING EQUIPMENT TRADING



## Mining and Earthmoving Equipment Trading

We specialize in global equipment trading for the mining, construction, and earthmoving sectors, focusing on the 50-ton class and above. Our services include sales, service, and spares management to ensure optimal performance and uptime. We offer a wide range of heavy earth moving equipment for sale, rental, or lease.

With a UAE-based stockyard, we provide fast supply and refurbishment of quality machinery to meet global demands.

### Our Product List:

- Dumpers (100 Ton & above)
- Tippers (25 ton & above)
- Excavators (4 Cum & above)
- Chain Dozers (400hp & above)
- Motor Graders (4 meter & above)
- Spare Parts

### COMPANIES INVOLVED:

KRASNY PROJECTS PVT.LTD  
THE GLOBAL MACHINES LLC-FZ

# EQUIPMENT SERVICING

## MULTI BRAND Equipment solutions

V-MECHANIC, our upcoming Multi brand Mining and Construction equipment Business Growth Partner (BGP) vertical offers the following services that accelerates the business opportunities for our clients:

- Sales, Service & Spares for Dumpers, Tippers, Trucks, Excavators, Dozers, Loaders, Graders.
- Complete Insurance & Under-writing services
- Equipment rentals with availability



**MECHANIC**  
MULTI BRAND SOLUTION



## BUSINESS GROWTH PARTNERSHIP (BGP)

We provide complete solutions to our clients that ensure that they focus on their operations:

- Annual Maintenance contracts for their fleet,
- Comprehensive insurance & risk management,
- Recovery and hassle-free accidental services,
- Business development through Joint Ventures,
- Access to technologies & global partnerships,
- Fleet rentals and leased asset deployment,
- Technical Human resource management.

## RE-BUILDING

We leverage our in-house engineering, CAD and re-building division to maintain the best conditions for equipment by rebuilding of casting and forged assemblies.

Our partnerships with Globally reputed OEMs and specialists compliments our expertise



# BULK MATERIAL HANDLING TECHNOLOGY



## Bulk Material Handling Solutions & Equipment under PRG Group:

Bulk material handling encompasses the machinery, devices, and systems essential for handling, moving, storing, and processing substantial quantities of bulk materials. This equipment is integral to sectors such as mining, construction, agriculture, manufacturing, and logistics, where handling loose, granular, or free-flowing substances is routine. Core functions include material transport, storage, loading/unloading, and processing through various methods like crushing, grinding, and mixing.

### Key Equipment & Solutions

- **Conveyors, Hoppers, Loaders, Crushers, and Dust Collection Systems:** These ensure efficient material flow, enhance productivity, and support seamless operations.
- **Retro-fitment & Service Enhancements:** Include repairs and reconditioning efforts to improve operational efficiency and longevity of equipment. Notable services:
  - Secondary Sizer repair, providing cost savings and enhancing durability.
  - Hard-facing fabrication on breaker plates to increase throughput and extend service life.
  - Bunker liner replacement, reducing downtime and optimizing performance.

### COMPANIES INVOLVED:

KRASNY PROJECTS PVT. LTD.





**Going forward:**  
From service contracts to  
Mine Development & Operations  
First Mile Connectivity  
Pipeline Projects  
Consulting



# NEW HORIZON OPPORTUNITIES

# MULTI INCOME MODEL

Environmental concerns have given rise to the need for the reduction in carbon footprint, minimizing noise and particle based pollution, adoption of green and efficient technologies to reduce fossil fuel consumptions and dependence there-in, while achieving ballooning production targets. This gives KRASNY PARTNERS a unique opportunity to leverage it's consortium strength and become an industry leader in the following verticals, supported by our GLOBAL PARTNERS



## M.D.O.

MINE DEVELOPMENT & OPERATION contracts will present a unique opportunity to mine owners to utilize KRASNY PARTNERS 360 degree operations capabilities with HEMM fleet management, which positions us differentially when compared with other traditional contractors.

M.D.O. is the way forward that ensures optimal productivity while conforming to all statutory and environmental norms.



## F.M.C./ L.M.C.

MINING GIANTS are committed to reduce carbon foot print through First Mile connectivity (FMC) where a fleet of Mobile Crushers-Conveyor combination will replace the traditional tipper/dumper coal haulage. Similarly Last Mile Connectivity (LMC) will be achieved by mobilizing conveyors to transport coal from stockyard to in-pit power plants or to railway sidings. KRASNY PARTNERS are committed to add value through it's expertise in this field.



## INFRA

MINING GIANTS have embarked into ambitious projects to utilize their waste lands, dump sites and under utilized assets by converting into SOLAR energy plants.

An opportunity which KRASNY PARTNERS shall shoulder utilizing their consortium capabilities.



PINAKI  
ROYCHOWDHURY  
GLOBAL



### INDUSTRY

- MINING & TECHNOLOGY
- EQUIPMENT TRADING
- BULK MATERIAL HANDLING
- FASHION INCUBATION
- FARM TECH
- SKILLING & PHILANTHROPY

### PRG ON THE WEB

web : [www.prglobal.co](http://www.prglobal.co)  
email : [corporate@prcgroup.in](mailto:corporate@prcgroup.in)  
phone : + 91 33 4003 21551 / 55  
cellular : +91 90070 55566

### COME OVER

PR GLOBAL  
175 Block G, New Alipore, Kolkata 700 053  
West Bengal, INDIA

**Higher !**

We must aspire.

**Further !**

We must reach into the  
depths of possibilities.

**Faster !**

We must react to  
change.

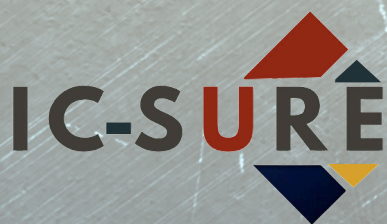
# PR GLOBAL BRANDS



**MECHANIC**  
MULTI BRAND SOLUTION



**CREDO**  
CREDOFORU.COM



# ABOUT PR GLOBAL

---

**Pinaki Roychowdhury Global Group (PRG Group)** is an emerging leader in industrial innovation, skill development, and social impact. With a diversified portfolio spanning mining technology, heavy equipment sales-service-rebuilding, fashion incubation and non-profit initiatives, PRC Global Group is positioned to drive value across multiple sectors. Headquartered in India, with global footprint at Dubai, Canada, Africa and East Europe, PRC Global Group is committed to excellence, sustainable practices, and responsible growth, with a clear path towards a future that has exponential growth opportunities within the domestic and foreign markets.

**PRG Group** is uniquely positioned to bring a diversified and sustainable portfolio to the public market. By integrating industrial expertise with social responsibility and a commitment to sustainable practices, PRC Global Group is set to attract investors who value innovation, resilience, and responsible growth. With a clear roadmap toward future readiness, PRC Global Group aims to unlock significant value for its shareholders and drive positive change in the industries and communities it serves.





## WHAT WE DO

- Mining Technology & Services.
- Bulk Material Handling Technology.
- Equipment Trading.
- Fashion Incubation & Skilling.
- Corporate Marketing.
- Agri-technology.
- CSR Initiatives.

## OUR ECO-SPACE

- KRASNY PROJECTS PVT.LTD.
- THE GLOBAL MACHINES LLC, DUBAI.
- IC-SURE PROJECTS MARKETING PVT LTD.
- CREDO CENTER OF EXCELLENCE
- PRG AGRO-TECH
- CREDO FOUNDATION





# FOUNDER'S MESSAGE



At **PRG**, we are dedicated to delivering comprehensive solutions that span commodities, infrastructure, engineering, and technology. Our commitment to sustainable impact is reflected in our various initiatives, particularly through our CSR arm, the CREDO Foundation, which focuses on community empowerment and social responsibility through innovative skilling programs.

In the mining sector, we ensure ethical sourcing and advanced practices: **KRASNY Projects Private Limited** oversees national operations, while **The Global Machines LLC-Dubai** manages international projects.

**IC-Sure Projects Marketing Private Limited**, with the CREDO Centre of Excellence, champions the apparel sector by training rural citizens in garment production and equipping designers with entrepreneurial skills to foster sustainable fashion manufacturing. Our IT division provides complex hardware and software solutions, including robust e-commerce platforms.

**PRG AGRI-TECH**, Our commodity services encompass a broad spectrum—from agriculture and horticulture. Additionally, we support rural technology initiatives that promote scientific farming methods, assist MSMEs, enhance logistics, and develop edu-tech platforms for improved knowledge accessibility.

**PRG, an integrated diversified Group, is positioned to expand into allied verticals creating a Global chain in Multi Brand Equipment Sales, Service and Managed services while also throttling ahead to create World class Fashion and Apparel global footprint.**



# CO-FOUNDER'S MESSAGE



**PRG** is focused into business ventures that support empowerment and contribute to the rural economic activities. Our projects are aligned towards the welfare of Women in particular as well as the under privileged in general.

## **CREDO Foundation: Touching Hearts, Spreading Smiles**

At CREDO (Confederation of Rehabilitation, Empowerment & Daedal Organizations), we believe in building a sustainable ecosystem that empowers every individual to thrive, regardless of gender, economic, or social background. Founded as a charitable trust in 2019, CREDO has grown rapidly, dedicated to weaving a new economy where everyone can be part of the mainstream.

With 360 registered NGOs and entities under our umbrella, CREDO has invested over ₹50 million in projects that drive inclusive growth and skill development. Under our principal vision of creating an empowered society - to incorporate an organization specifically dedicated to implementing empowerment projects.

Through our work, CREDO is more than a foundation—it's a movement toward an inclusive future. We are committed to touching hearts, spreading smiles, and fostering empowerment through innovative vocational incubation.



# OUR VISION

To be a global leader adding critical value to our clients while fostering innovation and delivering responsible, sustainable growth.

## MISSION 02

To build and scale an ecosystem that integrates industrial expertise with responsible business practices.

## MISSION 03

To maximize stakeholder value through disciplined growth and strategic expansion.

# OUR MISSION

## MISSION 01

To empower industries and communities through advanced technology, sustainable practices, and social impact initiatives.



# LET'S TALK



+ 91 84200 55560



[www.prcgroup.in](http://www.prcgroup.in)



[corporate@prcgroup.in](mailto:corporate@prcgroup.in)

